



Weekly Construction Progress Report

Morningside Elementary School

Week Ending: 09/24/2021

THIS WEEK

- Sitework continues
 - Storm drainage piping installation
- Mechanical equipment relocation continues
- Electrical rough-in continues throughout building
- Plumbing rough-in continues throughout building
- Sheetrock continues throughout building
- Sheetrock finishing continues throughout building
- Interior framing continues throughout building
- Fire sprinkler installation continues
- Door frame installation continues
- Plaster repair continues at Area A and B
- CMU and drywall infill
- Footing excavation for new gym
- CMU at new elevator shaft
- Concrete cutting for kitchen floor drains
- HVAC refrigerant piping installation begins

NEXT WEEK: 09.27.21 – 10.01.21

- Sitework continues
 - Storm drainage piping installation
- Mechanical equipment relocation continues
- Electrical rough-in continues throughout building
- Plumbing rough-in continues throughout building
- Sheetrock continues throughout building
- Sheetrock finishing continues throughout building
- Interior framing continues throughout building
- Footing excavation for cafeteria addition
- Fire sprinkler installation continues
- Door frame installation continues
- Plaster repair continues at Area A and B
- Drinking fountain installation at Area B
- HVAC refrigerant piping installation continues

BUDGET

Construction Budget

\$17,600,000.00

Budget Status

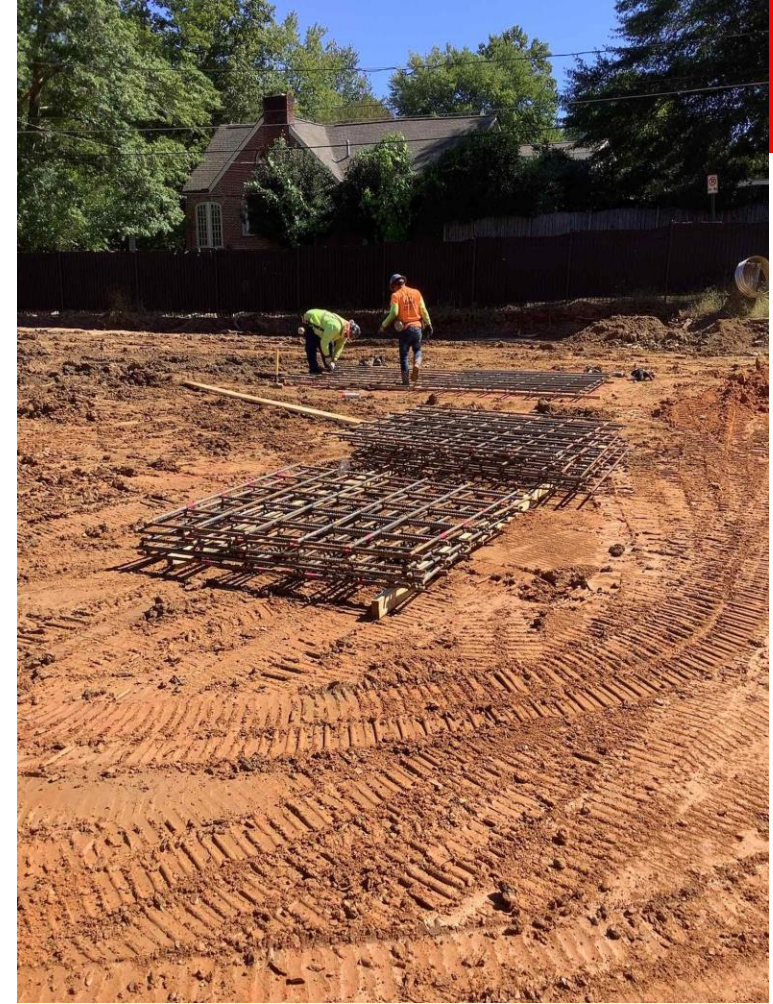
\$2,395,124.47

Completed By:
Ben Fairchild

PARRISH
CONSTRUCTION GROUP

Photo/Activity Updates

Excavation for new gym footings

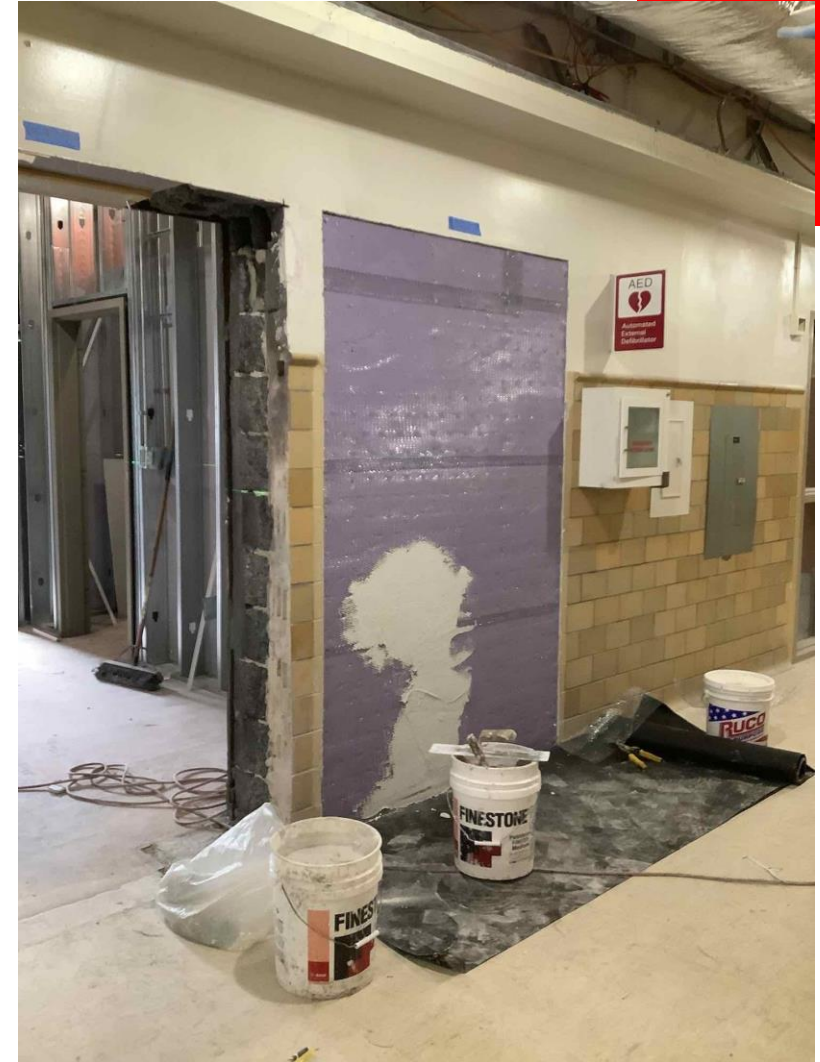


Rebar staging for new gym footings



Photo/Activity Updates

Electrical and plumbing rough-in and insulation at Art/STEM Rooms



Drywall infill at Area B Corridor



Photo/Activity Updates

CMU at new elevator shaft



Electrical rough-in at Area D

